

# ARTCC ARGENTINO AD 2.SAAR

**NO VALIDO PARA NAVEGACION REAL. ADAPTADO PARA SU UTILIZACION EN UN AMBITO VIRTUAL**  
**SAAR – ROSARIO / ISLAS MALVINAS**

## AD 2.17 ESPACIO AEREO ATC

### Zona de Control:

- |                                     |                         |        |
|-------------------------------------|-------------------------|--------|
| 1. Designación:                     | Zona de Control Rosario |        |
| 2. Límites verticales:              | <u>FL 035</u><br>GND    |        |
| 3. Clasificación del espacio aéreo: | C                       |        |
| 4. Distintivo de llamada:           | ROSARIO TORRE           |        |
| 5. Altitud de transición:           | 3000 FT.                |        |
| 6. Nivel de transición:             | QNH de 977 a 994        | FL 050 |
|                                     | QNH de 995 a 1013       | FL 045 |
|                                     | QNH de 1014 a 1031      | FL 040 |
|                                     | QNH de 1032 a 1050      | FL 035 |

### Area de Control Terminal:

- |                                     |   |
|-------------------------------------|---|
| 1. Designación:                     | Area de Control Terminal Rosario                                |
| 2. Límites verticales:              | <u>FL 245</u><br>2000 FT  |
| 3. Clasificación del espacio aéreo: | A: FL 245 / FL 195<br>B: FL 195 / FL 145<br>C: FL 145 / 2000 FT |
| 4. Distintivo de llamada:           | ROSARIO TORRE   |

## AD 2.18 INSTALACIONES DE COMUNICACIONES ATS

SERVICIO	DISTINTIVO DE LLAMADA	FRECUENCIA	OBSERVACIONES
APP	Rosario Torre	118.700	-

## AD 2.19 CARTAS AERONAUTICAS

- |                       |  |
|-----------------------|--|
| - Plano de aeródromo: | SAAR.APT   |
| - Cartas IAC:         | SAAR.IAC NO.1 RWY 20                             |
|                       | SAAR.IAC NO.2 RWY 20                             |
|                       | SAAR.IAC NO.3 RWY 20 (WITHOUT HOLD / SIN ESPERA) |
|                       | SAAR.IAC NO.4 RWY 20                             |
|                       | SAAR.IAC NO.5 RWY 20                             |
|                       | SAAR.IAC NO.6 RWY 20 (WITHOUT HOLD / SIN ESPERA) |

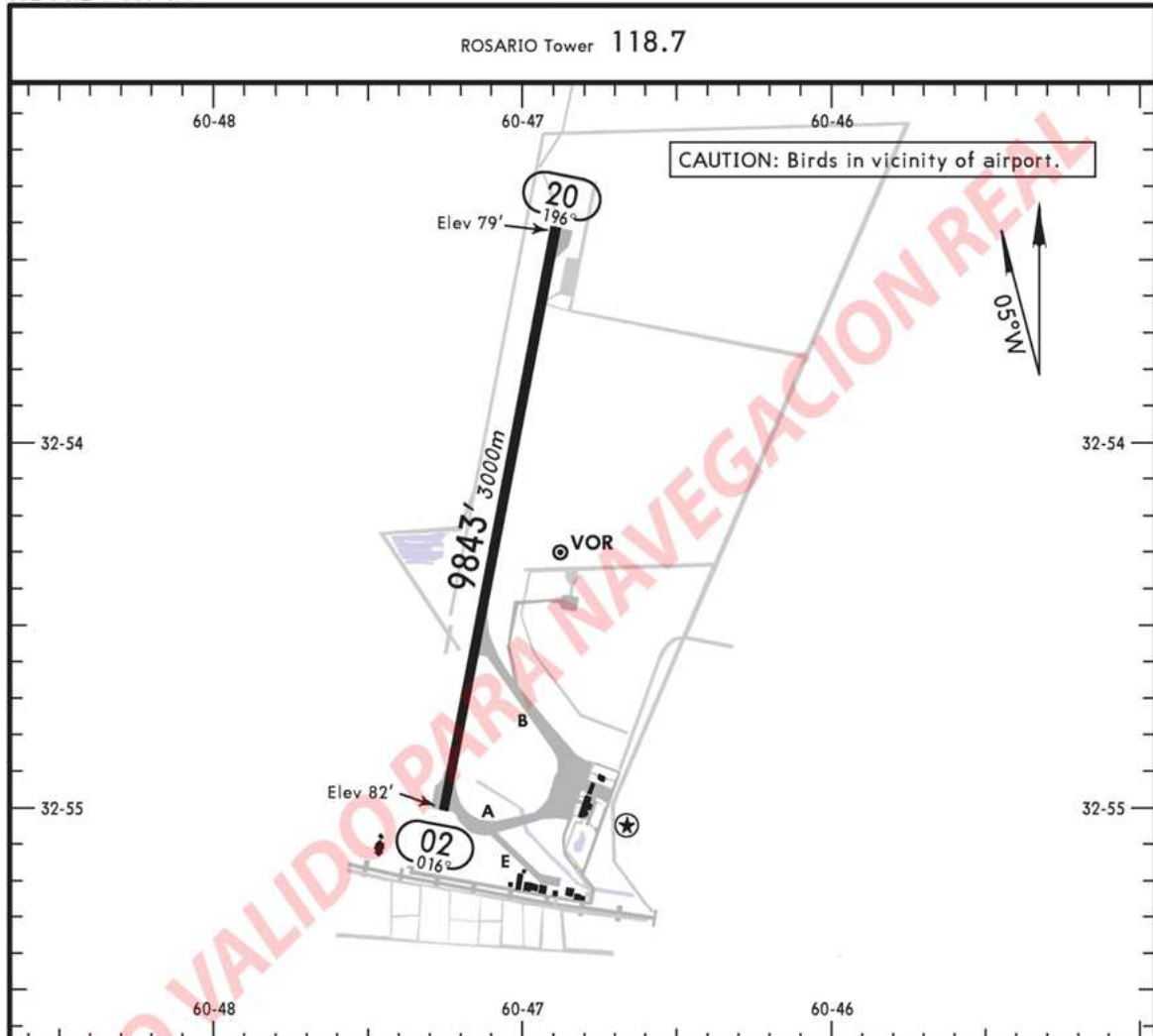
(DEJADO EN BLANCO INTENCIONALMENTE)

APT

SAAR

Apt Elev 85'  
S32 54.2 W060 47.1

ROSARIO, ARGENTINA  
ISLAS MALVINAS



ADDITIONAL RUNWAY INFORMATION

RWY				USABLE LENGTHS		TAKE-OFF	WIDTH
				LANDING BEYOND			
	RL	REIL	PAPI (angle 3.0°)	Threshold	Glide Slope		
02	RL	REIL	PAPI (angle 3.0°)				148'
20	RL	PAPI (angle 3.0°)					45m

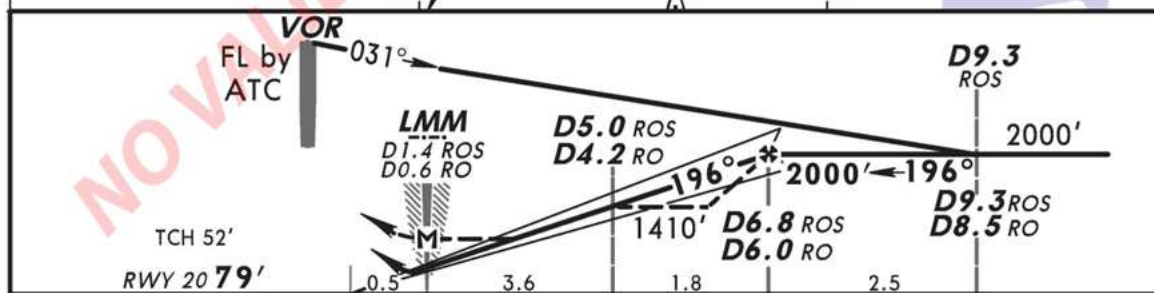
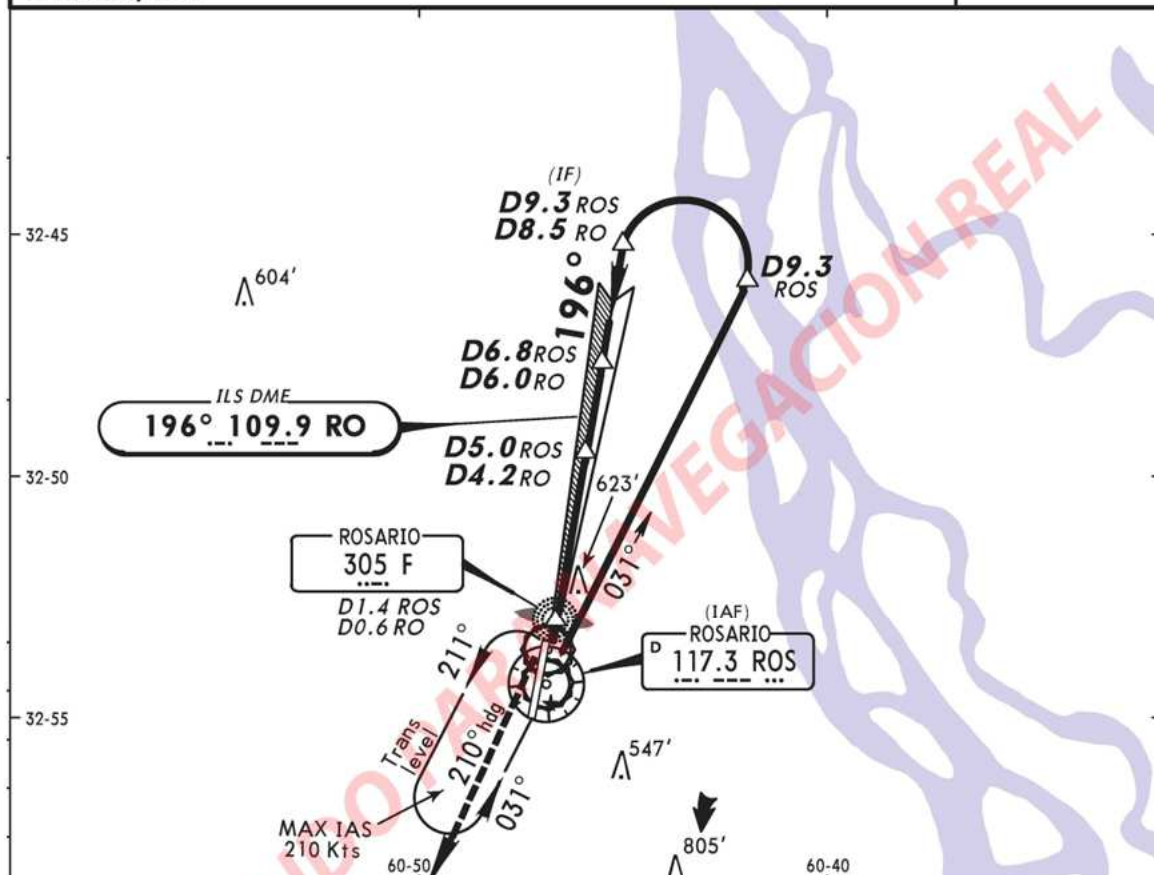
SAAR

ROSARIO, ARGENTINA

ISLAS MALVINAS

No. 1  
VOR DME ILS DME Rwy 20

				ROSARIO Tower 118.7	
LOC RO 109.9	Final Apch Crs 196°	Minimum Alt D6.8 ROS/D6.0 RO 2000' (1921')	ILS DA(H) 279' (200')	Apt Elev 85' Rwy 20 79'	<div><div>3000'</div><div>MSA ROS VOR</div></div>
MISSED APCH: Climb on 210° heading to 3000' and follow instructions from CONTROL.					
Alt Set: hPa 1. DME required.		Rwy Elev: 3 hPa	Trans level: By ATC	Trans alt: 3000'	



Gnd speed-Kts			70	90	100	120	140	160		PAPI	3000' on 210° hdg
GS 3.00°			377	484	538	646	753	861			
MAP at LMM or											
D6.8 ROS/D6.0 RO to MAP 5.4			4:38	3:36	3:14	2:42	2:19	2:02			
STRAIGHT-IN LANDING RWY20									CIRCLE-TO-LAND		
ILS			LOC (GS out)			Not Authorized East of Rwy 02/20 Centerline					
DA(H) 279' (200')			MDA(H) 460' (381')			Max Kts		MDA(H)			
A	1200m		2000m			100	620' (535')-2000m				
B						135	620' (535')-2800m				
C						180	790' (705')-3700m				
D						205	790' (705')-4600m				

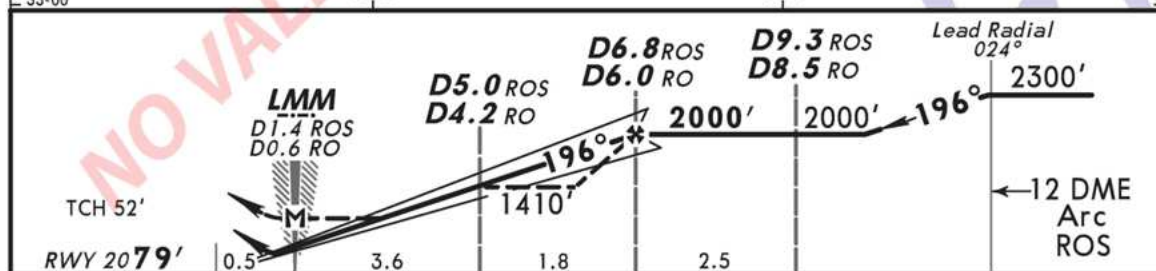
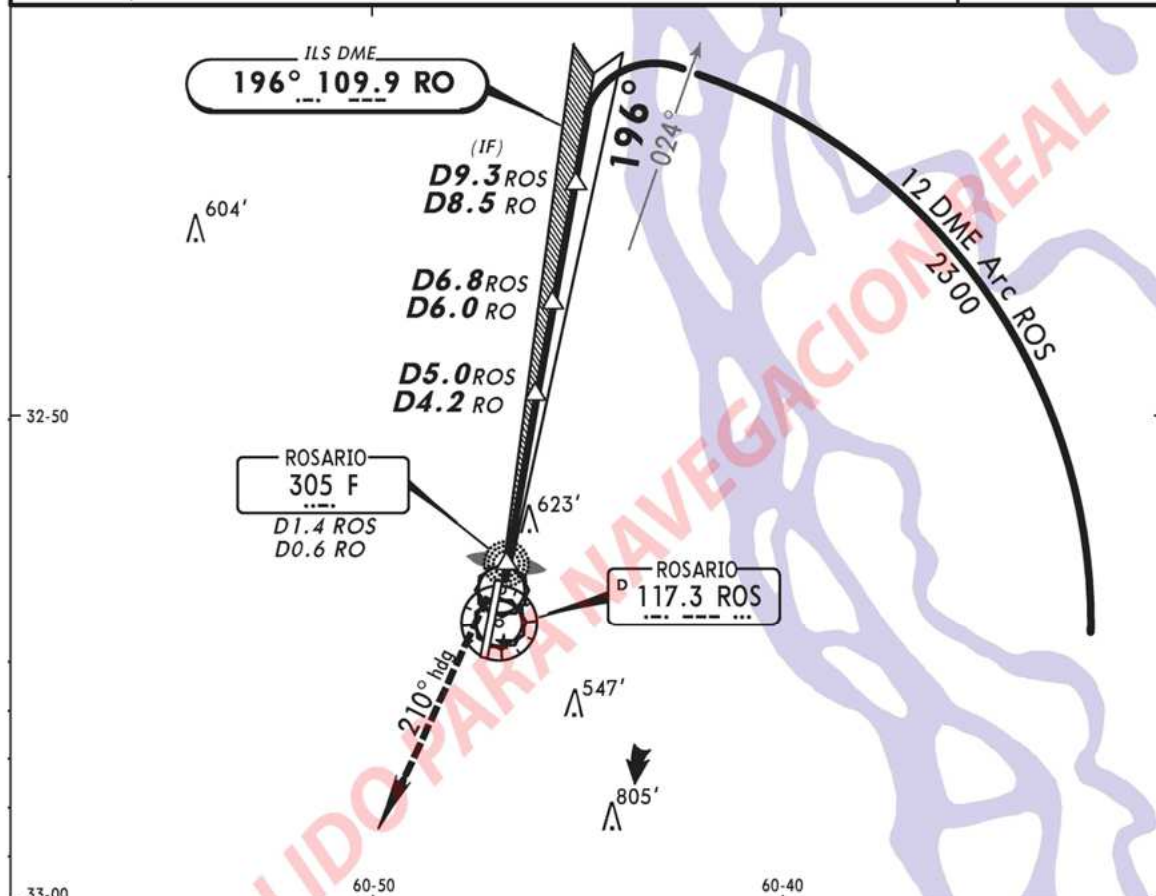
SAAR

ROSARIO, ARGENTINA

ISLAS MALVINAS

(DME Arc)VOR DME ILS DME Rwy 20

				ROSARIO Tower 118.7	
LOC RO 109.9	Final Apch Crs 196°	Minimum Alt D6.8 ROS/D6.0 RO 2000' (1921')	ILS DA(H) 279' (200')	Apt Elev 85' Rwy 20 79'	<div><div>3000'</div><div>MSA ROS VOR</div></div>
MISSED APCH: Climb on 210° heading to 3000' and follow instructions from CONTROL.					
Alt Set: hPa      Rwy Elev: 3 hPa      Trans level: By ATC      Trans alt: 3000'					
1. DME required.					



Gnd speed-Kts		70	90	100	120	140	160	PAPI	3000' on 210° hdg
GS 3.00°		377	484	538	646	753	861		
MAP at LMM or									
D6.8 ROS/D6.0 RO to MAP 5.4		4:38	3:36	3:14	2:42	2:19	2:02		
STRAIGHT-IN LANDING RWY20								CIRCLE-TO-LAND	
ILS		LOC (GS out)						Not Authorized East of Rwy 02/20 Centerline	
DA(H) 279' (200')		MDA(H) 460' (381')						MDA(H)	
A	1200m	2000m						Max Kts 100	620' (535')-2000m
B								135	620' (535')-2800m
C								180	790' (705')-3700m
D								205	790' (705')-4600m



IAC NO.3 RWY 20 (WITHOUT HOLD / SIN ESPERA)

SAAR

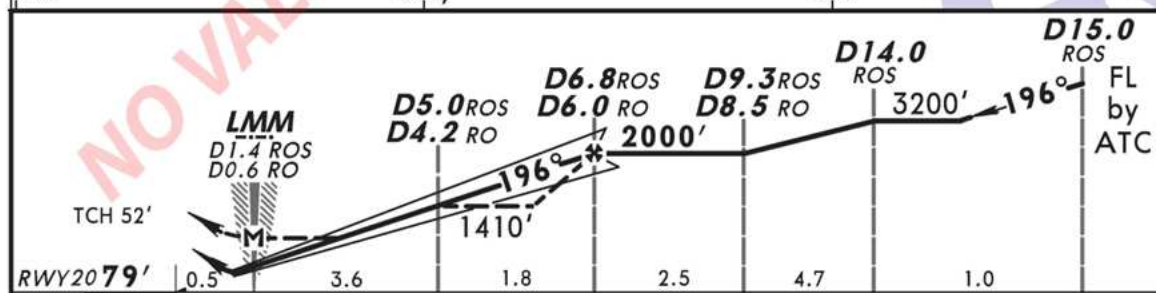
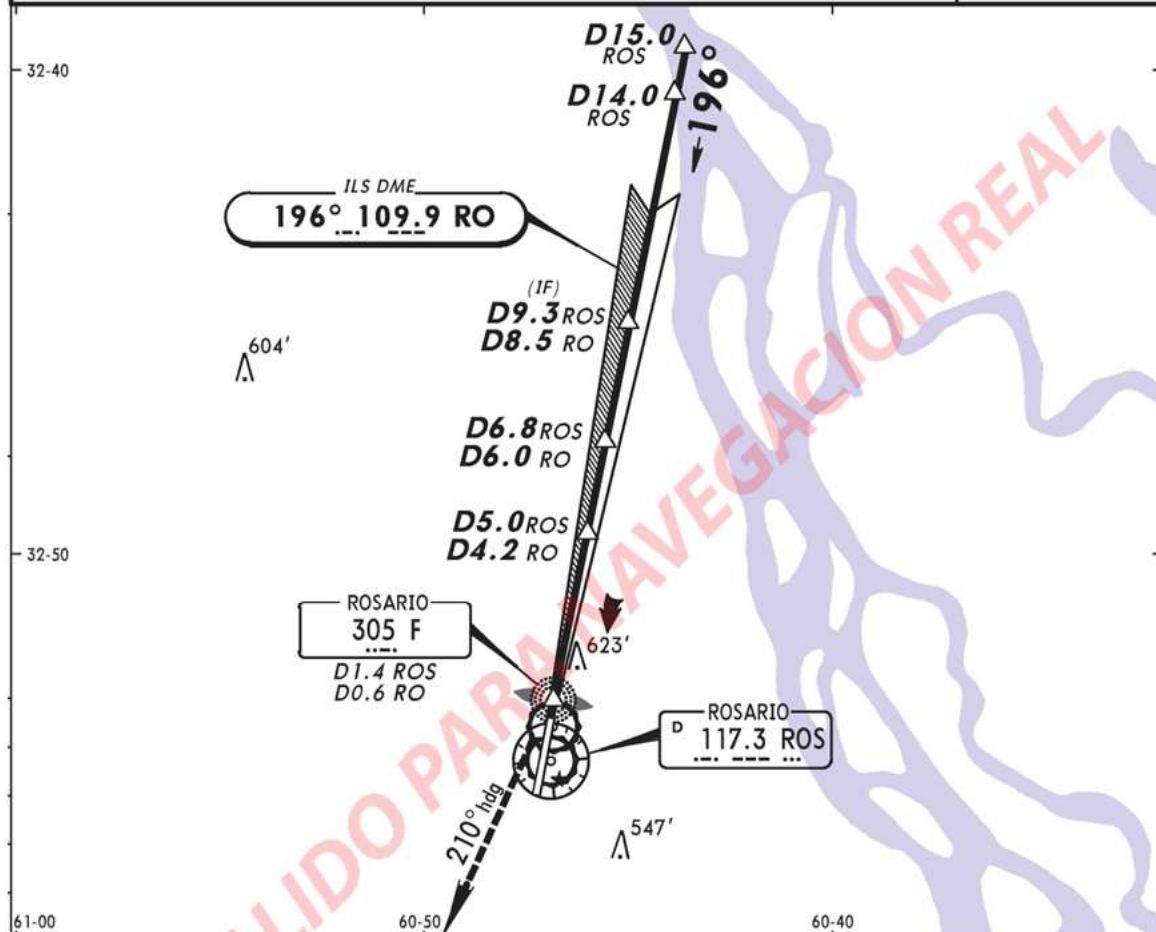
ROSARIO, ARGENTINA

No. 3

ISLAS MALVINAS

(Without holding) VOR DME ILS DME Rwy 20

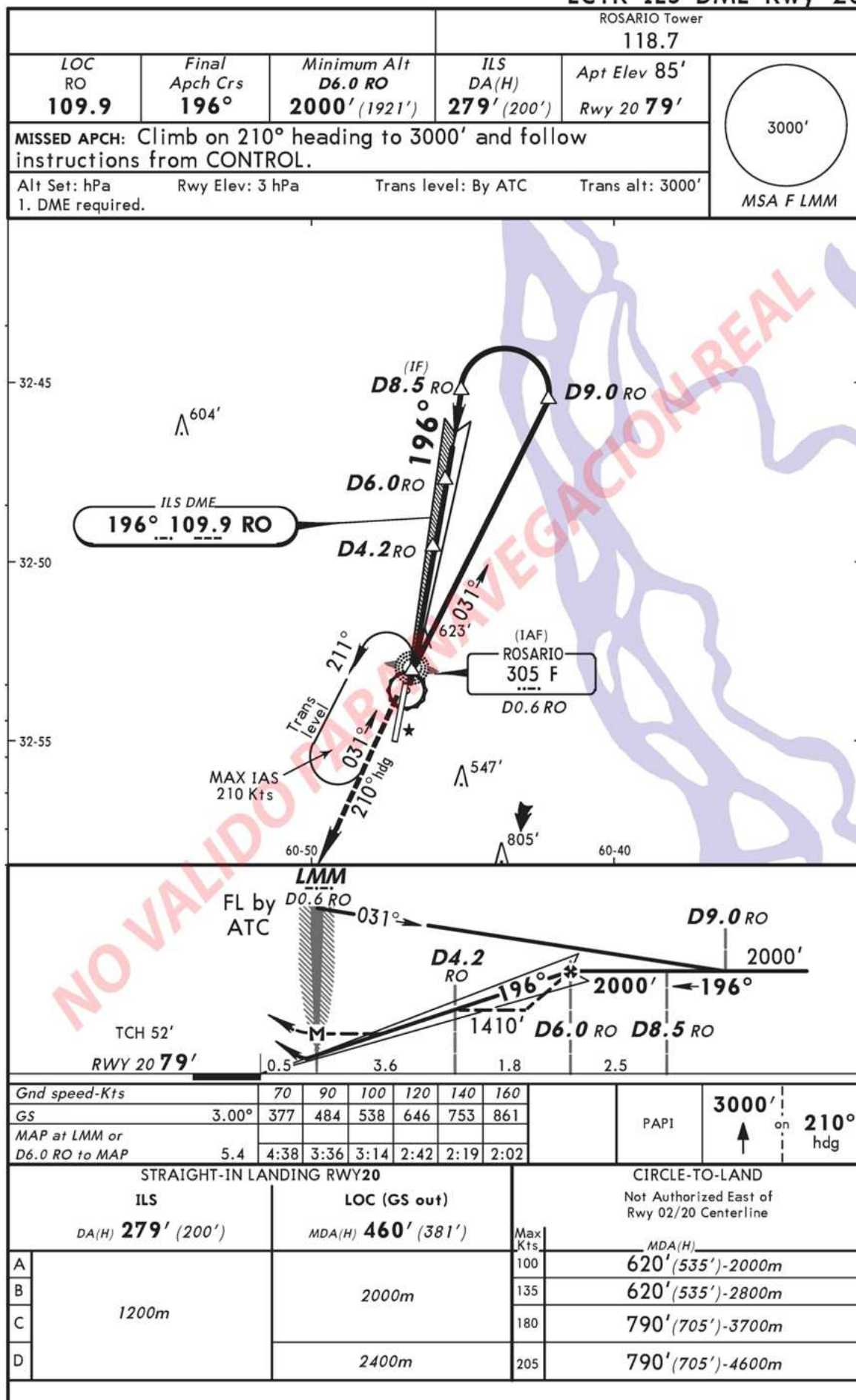
				ROSARIO Tower 118.7		<div><div>3000'</div><div>MSA ROS VOR</div></div>
LOC RO 109.9	Final Apch Crs 196°	Minimum Alt D6.8 ROS/D6.0 RO 2000' (1921')	ILS DA(H) 279' (200')	Apt Elev 85' Rwy 20 79'		
MISSED APCH: Climb on 210° heading to 3000' and follow instructions from CONTROL.						
Alt Set: hPa		Rwy Elev: 3 hPa	Trans level: By ATC	Trans alt: 3000'		
1. DME required.						



Gnd speed-Kts		70	90	100	120	140	160		
GS		3.00°	377	484	538	646	753	861	
MAP at LMM or									
D6.8 ROS/D6.0 RO to MAP		5.4	4:38	3:36	3:14	2:42	2:19	2:02	
STRAIGHT-IN LANDING RWY20					CIRCLE-TO-LAND				
ILS DA(H) <b>279'</b> (200')		LOC (GS out) MDA(H) <b>460'</b> (381')		Max Kts		Not Authorized East of Rwy 02/20 Centerline			
						MDA(H)			
A				100		620' (535')-2000m			
B		1200m		135		620' (535')-2800m			
C				180		790' (705')-3700m			
D				205		790' (705')-4600m			

SAAR  
ISLAS MALVINAS

ROSARIO, ARGENTINA  
No. 4  
LCTR ILS DME Rwy 20



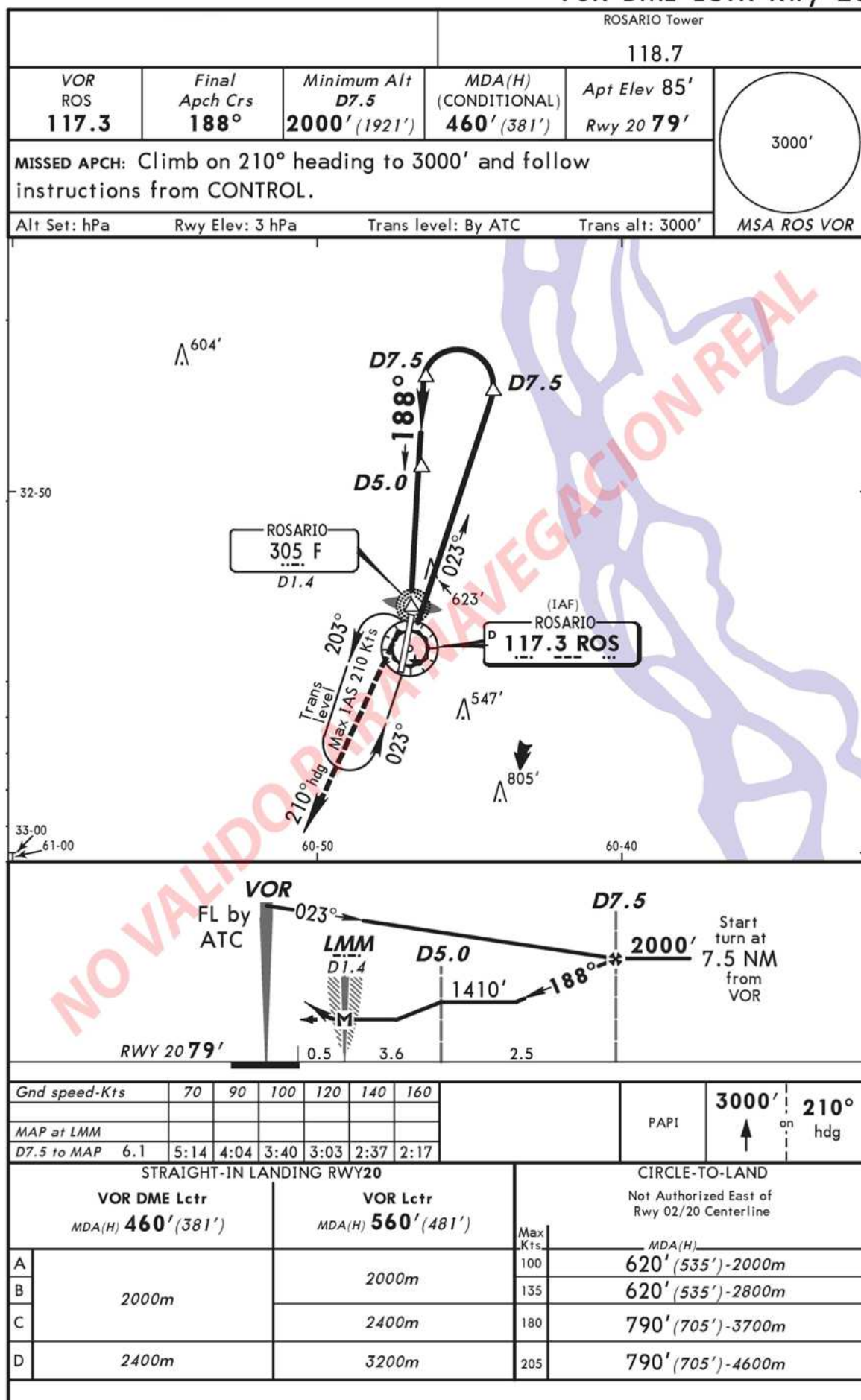
SAAR

ISLAS MALVINAS

ROSARIO, ARGENTINA

No. 5

VOR DME LCTR Rwy 20





IAC NO.6 RWY 20 (WITHOUT HOLD / SIN ESPERA)

SAAR

ROSARIO, ARGENTINA

ISLAS MALVINAS

No. 6

(Without Holding) VOR DME LCTR Rwy 20

